

LEXUS NX

LEXUS
EXPERIENCE AMAZING



PRODUCT GUIDE
Effective from **October 2025**

LEXUS



NX

At Lexus, we have a lot to be proud of. A pioneer and leader in luxury car electrification for more than 15 years. Over 2 million Self-Charging Hybrids on the road in every corner of the globe. A comprehensive range of electrified models that stand out for their sophistication, proven quality and award-winning reliability. These may be impressive facts, but for Lexus, performance is more than just numbers. And electrification is more than just batteries and motors. It's the unique chance to define a new kind of driving pleasure.

So when you make the human experience the hero, there's only one question that matters: how do we make you feel? Just drive the new NX and you'll know what we mean.

This is Lexus Electrified.

Scan the QR code to learn more about the NX



ALL IMAGES CONTAINED IN THIS DOCUMENT ARE FOR ILLUSTRATIVE PURPOSES ONLY. LOCAL SPECIFICATION MAY VARY.

SPECIFICATIONS



EXECUTIVE



SAFETY

- LSS+ 3
- Adaptive Cruise Control
- Anti-theft system - Intrusion Alarm, Glass Break Sensor, Angle, Ultra Wide Band
- Blind Spot Monitor
- Driver Monitor Camera
- eCall
- Electric Parking Brake (EPB)
- Electric Power Steering (EPS)
- Emergency Driving Stop System (EDSS)
- Hill-start Assist Control (HAC)
- Lane Tracing Assist (LTA)
- Parking Sensors w/ Braking (PKSB)
- Pre-Crash System
- Predictive Efficient Drive
- Rear Cross Traffic Alert and Braking (RCTAB)
- Reverse Camera w/ Guidelines
- Road Sign Assist
- Safe Exit Assist (SEA)
- Supplemental Restraint System (SRS) airbags

CONVENIENCE

- Drive Mode Select (Eco, Normal, Sport)
- Dual Zone Automatic Climate Control w/ Humidity Sensor & Nanoe X
- Electric Powered Steering Column
- Heated Steering Wheel
- Smart Entry & Start
- Power Back Door with Kick Function

INTERIOR & INSTRUMENTATION

- 12V socket, X1 Front & X1 Rear
- 3-Spoke Leather Steering Wheel W/ Audio Switches And Paddle Shifts
- 7" Multi-Information Display
- Ambient Lighting (Single Colour)
- Digital speedometer
- Door panel finish, Tahara Trim
- Illuminated Entry
- Rear-View Mirror, Electro Chromatic (Auto-Dimming)
- Wireless charger

AUDIO & NAV

- 10-speaker premium audio system
- 9.8" Touchscreen Display
- Bluetooth® Mobile Phone and Audio Connectivity
- Cloud Navigation
- Smartphone integration - Wireless Apple CarPlay* & Wireless Android Auto
- USB Charging Points: (X3 Fr) Type-C, (X2 Rr) Type-C

EXTERIOR & VISIBILITY

- LED Front & Rear Fog Lights
- LED Rear Combination Lights
- Rain Sensor
- Privacy Glass
- Bi-LED Single Bulb Headlamp w/ Automatic High Beam
- Integrated Roof Rails
- Dusk sensors
- Power, Heated Auto-Folding, Electrochromatic (Driver)Door Mirrors, Reverse Tilt

SEATS

- Driver And Passenger 8-Way Power Seat Adjustment
- Driver And Passenger Power Seat Slide
- Driver 4-Way Power Lumbar Support
- Front Seats Heated & Ventilated
- Driver Seat Memory - 3 user profiles
- Smooth Tahara Leather Upholstery

WHEELS

- 18" Alloy Wheels, (235/60 R18)
- Tyre Repair Kit

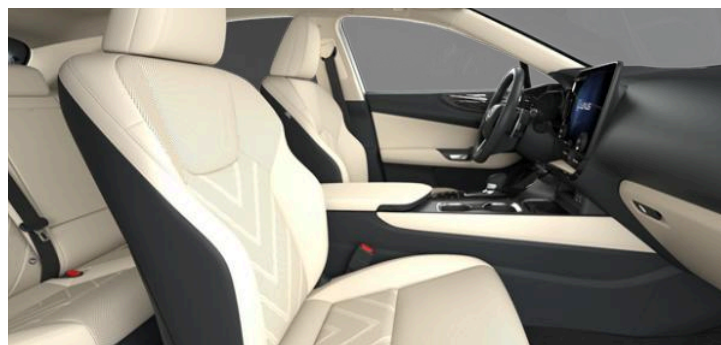
Lexus Link +

- Remote A/C
- Remote door lock

TECHNICAL SPECIFICATION

- HP **292**
- CO² Combined (WLTP) **65 g/km**
- Fuel Consumption Combined (WLTP) **2.9 l/100km**
- Annual Road Tax **€150**
- Braked Towing **1000 kg**
- EV Range **72km**

*Apple CarPlay is a trademark of Apple Inc.



PREMIUM

Adds to Executive



SAFETY

- Panoramic View Monitor
- Adaptive High Beam System

AUDIO & NAV

- 14" Touchscreen Display
- Embedded Navigation

EXTERIOR & VISABILITY

- Cornering Lamps
- Front Indicator Lights, LED
- Panoramic Electric Tilt & Slide Sunroof
- Quad-LED Headlamps w/ cleaners

WHEELS

- 20" 5 Double Spoke Alloy Wheels, (235/50 R20)
- Run Flat Tyres

TECHNICAL SPECIFICATION

- HP **292**
- CO² Combined (WLTP) **73 g/km**
- Fuel Consumption Combined (WLTP) **3.2 l/100km**
- Annual Road Tax **€150**
- Braked Towing **1000 kg**
- EV Range **66km**



F SPORT

Adds to Premium



SAFETY

- Adaptive Variable Suspension
- Drive Mode Select (Eco, Normal, Sport, Sport+)

CONVENIENCE

- Ambient Lighting (Multi Colour)

INTERIOR & INSTRUMENTATION

- Door Courtesy Lights, LED
- F Aluminium Door Inlay
- F SPORT Stainless Steel Scuff Plates, Front Doors
- Head-Up Display (HUD)
- F SPORT Leather Steering Wheel W/ Touch Switches
- F SPORT Aluminium Pedals
- Perforated Leather Trimmed Gearshift Knob

SEATS

- 4-Way Manually Adjustable Front Headrest
- 2-Way Lumber Support, Driver Seat
- Heated Rear (Outer) Seats
- Sports Front Seats
- F SPORT Leather Upholstery on Front and Rear Seats

WHEELS

- 20" F SPORT Alloy Wheels (235/50 R20)

EXTERIOR & VISABILITY

- Panoramic View Monitor
- Black Roof Rails
- F-mesh Signature Grille
- F SPORT Front and Rear Bumper

TECHNICAL SPECIFICATION

- HP **292**
- CO² Combined (WLTP) **73 g/km**
- Fuel Consumption Combined (WLTP) **3.2 l/100km**
- Annual Road Tax **€150**
- Braked Towing **1000 kg**
- EV Range **66 km**



NX EXTERIOR COLOURS



Radiant Red **(3T5)**



Sonic Grey **(1L1)**



Sonic Titanium **(1J7)**



Graphite Black **(223)**



Terrane Khaki **(6X4)**



Celestial Blue **(8Y6)**



F White **(083)**



Sapphire Blue **(8X1)**
(F SPORT Only)

LEXUS

NX INTERIOR TRIMS

To build upon the elegant interior of NX, a range of newly developed, modern and intricate details and trims have been created for its cabin.



3D BLACK PRISM

Takes the ever-appealing piano black finish but adds a carved three-dimensional fractal pattern to create trim with a vital x tech image (Executive + Premium)



F ALUMINIUM

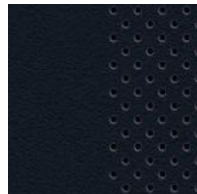
The F SPORT exclusive features spin-machined aluminium for a cold, sharp alluring finish

LEXUS

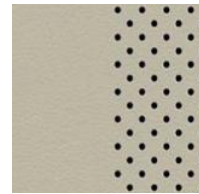
NX INTERIOR COLOUR SCHEMES

A total of 7 interior colours are offered, 4 for Executive & Premium and 3 for F SPORT

EXECUTIVE & PREMIUM



Black Leather
(LA21)



Ammonite Sand
Leather (LA01)

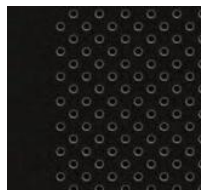


Dark Rose
Leather (LA31)

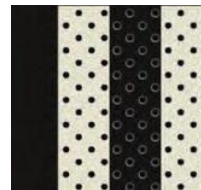


Hazel Leather
(LA41)

FSPORT



Black F SPORT
Leather (LB23)



White F SPORT
Leather (LB03)



Flare Red F SPORT
Leather (LB33)

PERFORMANCE AND EFFICIENCY



PERFORMANCE	2.5 PHEV AWD
ENGINE (cc)	2.5 litre 4-cylinder in line
ACCELERATION 0-100 km/h (s)	6.3
MAX SPEED (km/h)	200km/h
MAX POWER (hp/kW)	292 / 215
MAX TORQUE (Nm)	227 @ 320 - 3700

EMMISSIONS & FUEL	2.5 PHEV AWD
CO ₂ (g/km)	65 - 73
FUEL (l/100km combined)	2.9 - 3.2
NITROGEN OXIDES (NO _x)	4.2

DIMENSIONS	2.5 PHEV AWD
LENGTH	4660
WIDTH	1865
HEIGHT	1660-1670
WHEELBASE	2690
TURNING CIRCLE (m)	11.6
MAX BOOT CAPACITY (l)	520
CURB WEIGHT (kg)	2065

AC CHARGING TIMES	2.5 PHEV AWD
32A WALLBOX	Up to 2hrs 30mins
10A HOME SOCKET	Up to 9hrs
ON BOARD CHARGER (kW)	6.6
BATTERY CAPACITY (kWh)	18.1
EV RANGE (km)	66 - 72

NX KEY ACCESSORIES

NX ESSENTIAL PACKS



TRUNK LINER

Tailored to fit the trunk of your vehicle and provide protection against dirt and spills. The design features a special anti-slip surface pattern to help stop luggage moving.



FRONT & REAR MUD GUARDS

Lexus Mudguards are especially shaped to fit the wheel arches of your vehicle. They help maintain the vehicle exterior by protecting against excessive dirt, mud spray and flying stone chips.

NX SIDE STEPS



SIDE STEPS

Easy access combines with a style feature along the side of your car. Lexus side steps add a stylish design feature while also protecting the side of your Lexus against scratching.

NX LEXUS HOMECHARGE



LEXUS HOMECHARGE

Is the fastest and most convenient way to charge your electric vehicle at home. The Lexus HomeCharge electric vehicle charger is the only charger compatible with the Lexus Link App. Contact your dealer for pricing.

NX STYLE PACK



CHROME SIDE SILLS

A bold dash of chrome along the lower side contours to emphasize the NX's sculptured urban styling.



REAR CHROME GARNISH

The rear chrome garnish makes a statement by highlighting your car's strong rear-end design.



Scan the QR Code for more information on accessories.

DISCOVER PLUG-IN HYBRID

Plug-in Hybrids combine electric power and a petrol engine in one advanced powertrain. With a bigger battery plus the option to charge, Plug-in Hybrids offer increased pure-electric driving capability in EV mode than regular hybrids. The petrol engine also makes them ideal for longer trips.



Refuel as usual

Refuelling your Plug-in Hybrid is easy. Top up with petrol as normal at filling stations to drive the combustion engine.



Easy charging

A wallbox will help deliver fast and hassle-free charging at home. You can also charge your Lexus Plug-in Hybrid at home from a standard power supply. And on the move you can use the public charging network.



Lower emissions

With the ability to travel further than Hybrids on electric power alone, Lexus's Plug-in Hybrid cars can cover local trips in EV mode, using no fuel and with no tailpipe emissions. Emissions may be associated with other aspects of the car's life cycle, such as tyre and brake wear.



Scan the QR Code to learn more about Lexus Plug In Hybrid!



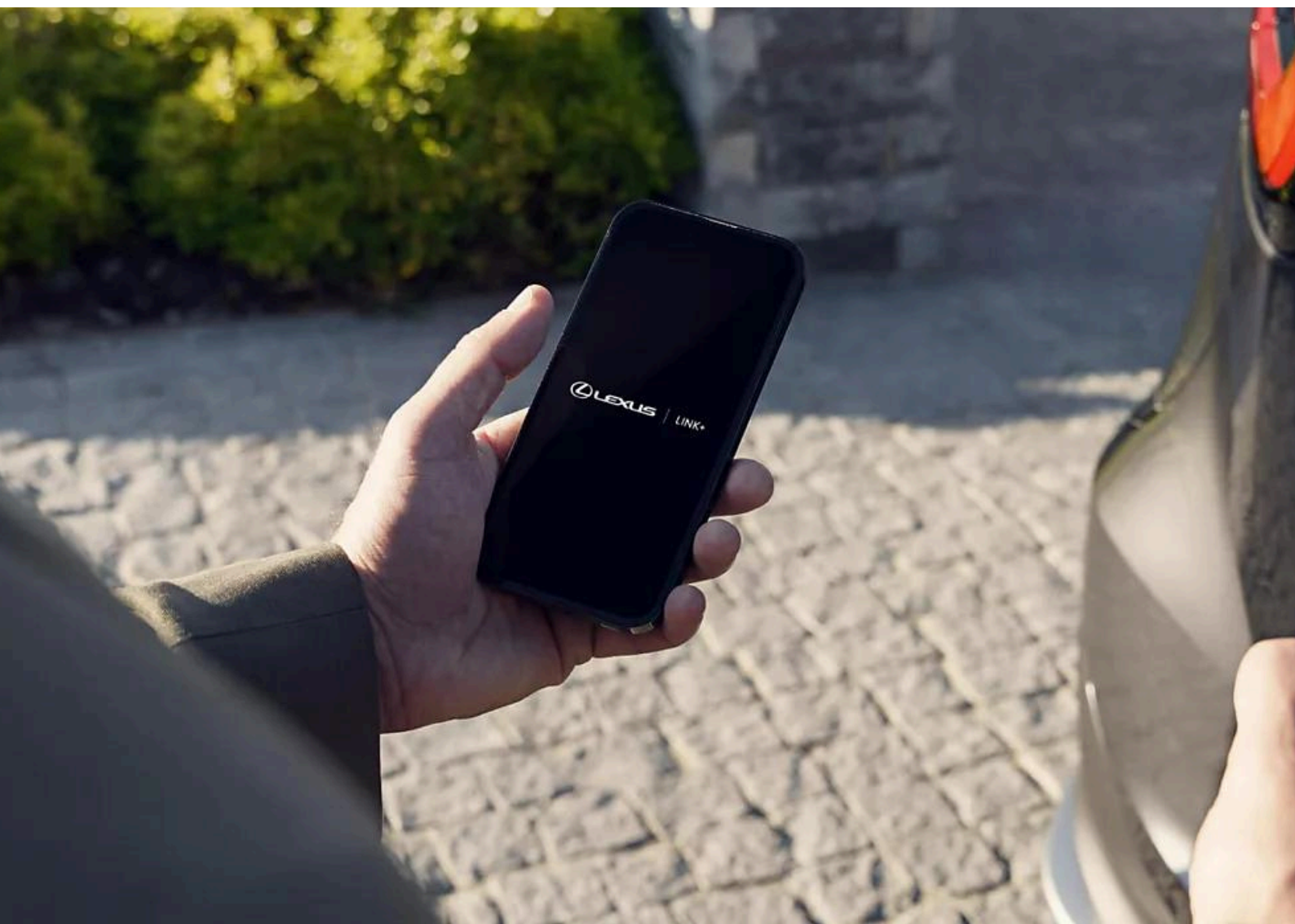
LEXUS



LEXUS LINK + CONNECTED SERVICES

Driving in a Lexus has never been better and with Lexus Link + Connected Services the experience becomes even smoother, so you're always comfortable and in control, no matter where your drive takes you.

Scan the QR code to learn more about the Lexus Link + Connected Services.



LEXUS SAFETY SYSTEM +

Born from decades of innovation and rigorous investigation into the causes of accidents, Lexus Safety System + addresses the three key areas of accident prevention: frontal collisions, unintended lane departures and night-time accidents, through these five innovative systems. It also includes systems to enhance driver situational awareness, thereby potentially reducing the risk of accidents.



Pre-Collision System

Recognizes a potential head-on impact and a wide range of objects in the car's path, including pedestrians, cyclists and motorcycles.



Lane Departure Alert

The lane-centring function will alert the driver if the vehicle starts to deviate from its lane.



Automatic High Beam

Designed to optimise visibility during night driving by automatically switching between high and low beam for oncoming vehicles and leading traffic.



Road Sign Assist

Monitors the road signs ahead, displaying useful information such as the current speed limit.



Dynamic Radar Cruise Control

Drivers can choose their cruising speed at a pre-set distance from the vehicle in front. If this distance falls, the system will reduce its speed.



Scan the QR Code to learn more about Lexus Safety System +

MANUFACTURER'S WARRANTY

For peace of mind Lexus manufacturer's warranty ensures that every trip runs smoothly with:



Manufacturer Warranty

- 3yrs/100,000km - Manufacturers Warranty
- 5yrs/100,000km - All Hybrid Components
- 12yrs/unlimited mileage - Corrosion Perforation



Hybrid Warranty

- 5yrs/100,000km - All Hybrid Components (Including Hybrid Battery)
- Up to 15yrs/unlimited mileage Hybrid Battery Extended Care once serviced with a Lexus Dealer



Lexus Assistance

If you ever need help, Lexus Assistance is there for you, whenever you need breakdown cover in Ireland or Europe. Euro Assistance 24 offers Lexus roadside assistance 24 hours a day, seven days a week and 52 weeks a year.

- Arrange Hotel Accommodation in an Emergency
- Should You Be Unable to Drive
- Organise Roadside Assistance if Necessary

Call 1800 200 862 in Ireland or +353 1 6193641 from abroad.

For further warranty details or recovery services contact your local Lexus Dealer.



LEXUS



LEXUS RELAX

Lexus Relax is a testament to the confidence we place in the quality of our vehicles. After your manufacturer's warranty finishes, you can still feel complete peace of mind, with 12 months OR 15,000km warranty when you service with us. So you can rest assured that your car is in safe hands – with expert technicians, who only use genuine parts. So your Lexus stays 100% Lexus.

Once your service is due, all you need to do is bring your Lexus in for a service and your Lexus Relax warranty will be renewed until your next service is due – up to 10 years vehicle age or 185,000km (whichever comes first) after the expiration of the manufacturer's warranty. See Lexus Website (www.lexus.ie) for more details.







To the best of our knowledge, all information in this product guide is correct at the time of going to print. Details of specifications and equipment provided in this product guide are subject to local conditions and requirements and may, therefore, vary from models available in your area. Please enquire with your local dealer for details on your local specifications and equipment. Vehicle body colours may differ slightly from the printed photographs in this Product Guide. Lexus Ireland reserves the right to alter any details of specifications and equipment without prior notice.

© 2025 by Lexux Ireland. No part of this publication may in any way be reproduced without the prior written approval of Lexus Ireland.