

# LEXUS RX



PRODUCT GUIDE  
Effective from **November 2025**

LEXUS



# RX

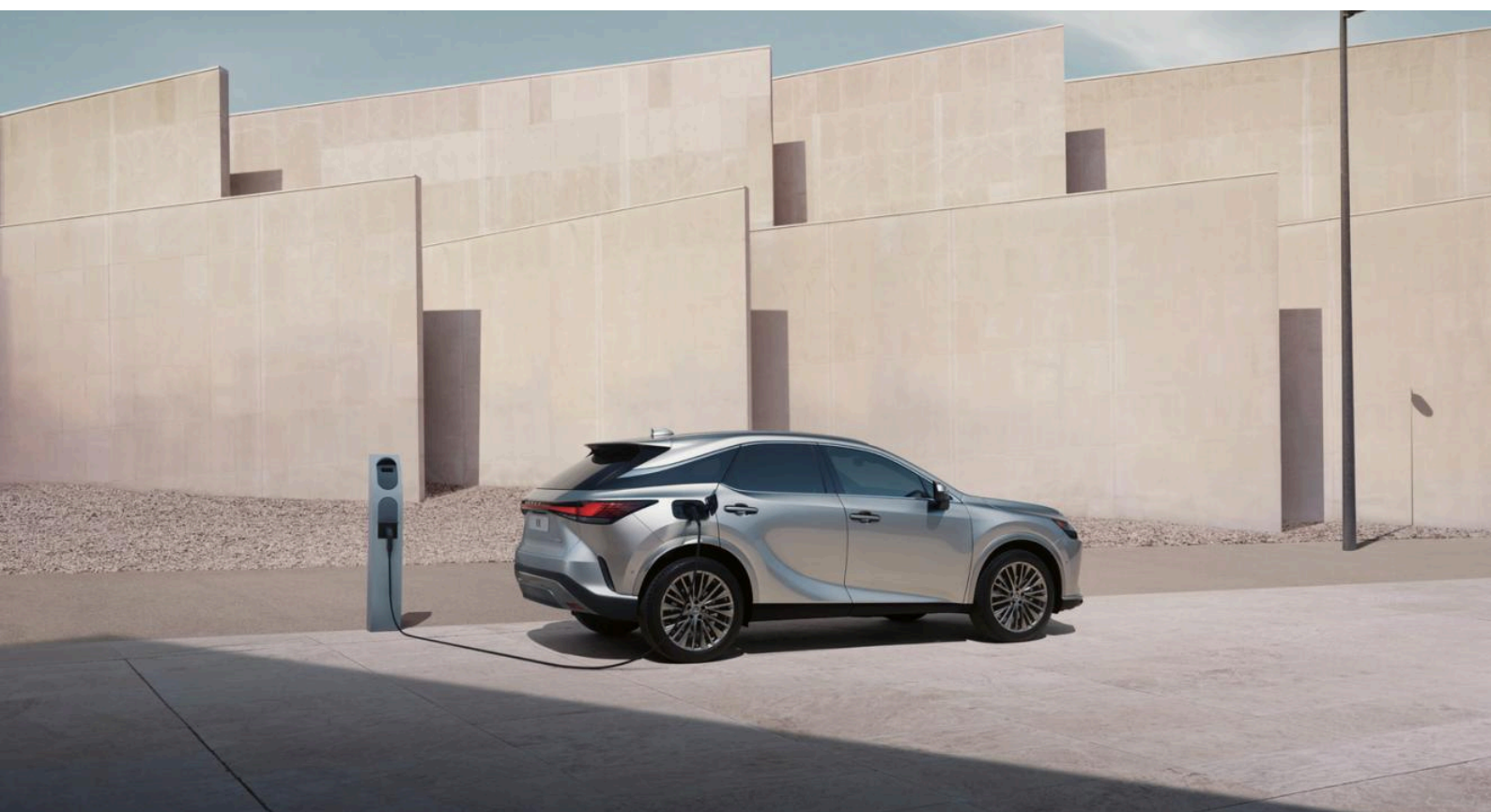
At Lexus, we have a lot to be proud of. A pioneer in luxury car electrification for nearly 20 years. Over 2 million Self-Charging Hybrids on the road across the globe. Cars that stand out for their sophistication, proven quality and award-winning reliability.

These are impressive facts, but for Lexus, performance is more than just numbers. And electrification is more than just batteries and motors. It's the chance to define a new kind of driving pleasure, where each journey radiates confidence, control and comfort. With your Lexus responding instantly to our every move, you'll enjoy a luxury that is personal, a luxury rooted in the uniquely crafted connection between car and driver

Just drive the new RX450h+ Plug-in Hybrid and you'll know what we mean.

This is Lexus Electrified.

Scan the QR code to learn more about the Lexus RX



ALL IMAGES CONTAINED IN THIS DOCUMENT ARE FOR ILLUSTRATIVE PURPOSES ONLY. LOCAL SPECIFICATION MAY VARY.



---

# SPECIFICATION

---





## SAFETY

- Lexus Safety System - LSS+ 3
- Adaptive Cruise Control
- Automatic Rear Flashing Hazard Lights (ARFHL)
- Blind Spot Monitor
- Drive Mode Select (Eco, Normal, Sport)
- Driver Monitor Camera
- eCall
- Electric Parking Brake (EPB)
- Emergency Driving Stop System (EDSS)
- Hill-Start Assist Control (HAC)
- Intelligent Parking Assist Sensors, Front and Rear
- Lane Change Assist
- Lane Trace Assist
- Panoramic View Monitor
- Parking Sensors w/ Braking (PKSB) - Objects, Vehicles, Pedestrians
- Pre-Crash System
- Predictive Efficient Drive
- Rear Cross Traffic Alert and Braking (RCTAB)
- Road Sign Assist
- Safe Exit Assist
- Supplemental Restraint System (SRS) Airbags

## EXTERIOR &amp; VISABILITY

- Cornering Lights
- Daytime Running Lights (DRL), LED
- Heated Door Mirrors, Electrically Auto-Fold & Adjustable
- Integrated Roof Rails - Silver
- LED Front Fogs
- Panoramic Roof w/ Tilt & Slide
- Rain Sensor
- Rear Side Privacy and Acoustic Glass
- Triple-LED Headlamps w/ Automatic High Beam

## INTERIOR &amp; INSTRUMENTATION

- 12.3" Digital Multi-Information Display
- 3 - Spoke Leather Trimmed Steering Wheel, Heated w/ Audio Switches And Paddle Shifts
- Instrument Panel - Film
- Rear-View Mirror, Electro Chromatic (Auto-Dimming)
- Tahara Trim on Dashboard
- Wireless Charger

## CONVENIENCE

- Ambient Lighting (64 Colour)
- Electric Powered Steering Column
- Illuminated Entry
- Luggage Compartment Power Fold on Rear Seats
- SmartEntry w/ Power Back Door with Kick Function
- Triple Zone Automatic Climate Control w/ Humidity Sensor

## SEATS

- Ammonite Sand or Black Leather Seats
- Driver And Passenger Power 8-Way Seat Adjustment w/ Driver Memory
- Driver and Passenger 2-Way Power Lumbar Support
- Front Seats Heated & Ventilated
- Rear Seat - Manual Fold and Recline

## AUDIO &amp; NAV

- 12- Speakers
- 14" Touchscreen Display
- Smartphone Integration (Wireless Apple CarPlay™\* and Wireless Android Auto™)
- Embedded Navigation
- USB Connector (X3 fr, X2 rr - Type - C)

## WHEELS

- 21" Machine Faced Alloy Wheels, (235/50 R21)
- Tyre Repair Kit

## Lexus Link

- Remote Climate Control
- Digital Key

## TECHNICAL SPECIFICATION

- HP **292**
- EV Range (Combined Cycle) **67 km\*\***
- CO<sup>2</sup> Combined (WLTP) **75 g/km\*\***
- Fuel Consumption Combined (WLTP) **3.3 l/100km\*\***
- Annual Road Tax **€150**
- Braked Towing **2000 kg**

\* Apple CarPlay is a trademark of Apple Inc.

\*\* Pending Final Homologation



# F SPORT

Adds to Luxury



## INTERIOR & INSTRUMENTATION

- Head Up Display
- Leather Steering Wheel, Heated w/ Touch Configurable Switches And Paddle Shifts

## EXTERIOR & VISABILITY

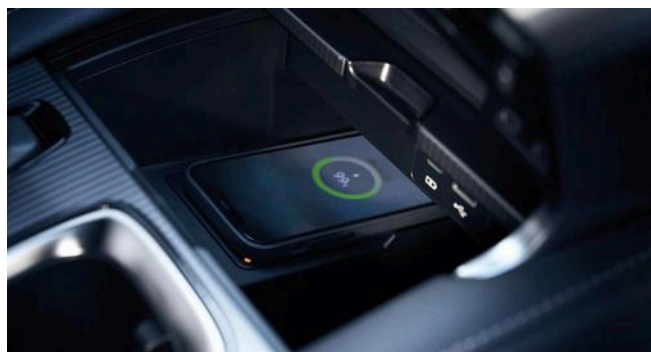
- Exterior Mirror Covers – Black
- F SPORT Badging – Front Wing
- F SPORT Front, Rear Bumpers and Grille
- Integrated Roof Rails – Black

## WHEELS

- 21" F SPORT Design Gloss Black Alloy Wheels, 10 Spoke (235/50 R21)

## TECHNICAL SPECIFICATION

- HP **292**
- EV Range (Combined Cycle) **67 km**
- CO<sup>2</sup> Combined (WLTP) **75 g/km**
- Fuel Consumption Combined (WLTP) **3.3 l/100km**
- Annual Road Tax **€150**
- Braked Towing **2000 kg**





RX GRADES

# PREMIUM

Adds to F SPORT



## INTERIOR & INSTRUMENTATION

- Leather and Wood Steering Wheel, Heated w/ Touch Switches And Paddle Shifts
- Instrument Panel - Wood
- Driver and Front Passenger Radiant Heater

## EXTERIOR & VISABILITY

- Adaptive Variable Suspension
- Intelligent Parking Assistance
- Manual Sun Shade for Rear Doors
- Triple-LED Headlights with Adaptive Highbeam

## SEATS

- 10-Way Electrically Adjustable Driver & Front Passenger Seat
- 4-Way Lumbar Support, Driver & Front Passenger Seat
- Front And Rear (Outer) Seats Heated & Ventilated
- Front Passenger Seat Position Memory - 3 User Profiles
- Rear Seat - Electric Fold And Recline
- Semi-Aniline Leather Upholstery

## AUDIO & NAV

- 220v Socket, Rear
- 21-Speaker Mark Levinson® Premium Surround Sound System

## TECHNICAL SPECIFICATION

- HP **292**
- EV Range (Combined Cycle) **67 km \*\***
- CO<sup>2</sup> Combined (WLTP) **75 g/km \*\***
- Fuel Consumption Combined (WLTP) **3.3 l/100km \*\***
- Annual Road Tax **€150**
- Braked Towing **2000 kg**

## WHEELS

- 21" Premium Dark Grey Alloy Wheels, (235/50 R21)

\*\* Pending Final Homologation



# EXTERIOR COLOURS



Deep Blue **(8X5)**



Sonic Titanium **(1J7)\***



Sonic Grey **(1L1)**



Graphite Black **(223)**



Sonic Platinum **(1L2)\*\***



F White **(083)\*\***



Sapphire Blue **(8X1)\*\***

\*Not available on F SPORT  
\*\*Only available on F SPORT

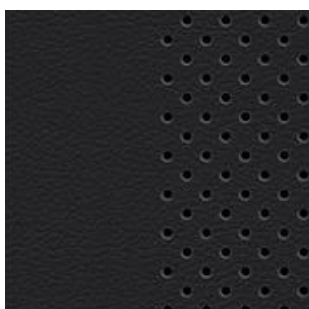
LEXUS

# RX INTERIOR TRIMS

Luxury and F SPORT Smooth Leather



**Ammonite Sand (LB03)**



**Black (LB23)**  
F SPORT only

Premium Semi-Aniline Leather

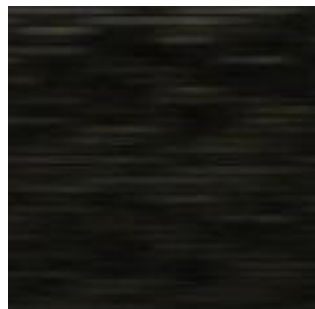


**Ammonite Sand (LA01)**

LEXUS

# RX INTERIOR INLAYS

Inlays



**Luxury and F SPORT  
Black Hologram**



**Premium  
Ash Sumi Black**



# PERFORMANCE AND EFFICIENCY



PERFORMANCE	2.5 PHEV AWD
ENGINE (cc)	2.5 litre 4-cylinder in line (2487)
BATTERY (Type/Cells)	Lithium-ion Battery
ACCELERATION 0-100 km/h (s)	6.9
MAX SPEED (km/h)	200
MAX POWER (hp/kW)	292 / 215
MAX TORQUE (Nm @ prm)	227 @ 3200 - 3700

EMMISSIONS & FUEL	2.5 PHEV AWD
CO <sub>2</sub> (g/km)	75 *
FUEL (l/100km combined)	3.3 *
NITROGEN OXIDES (NO <sub>x</sub> )	3.0

DIMENSIONS	2.5 PHEV AWD
LENGTH	4890
WIDTH	1920
HEIGHT	1695
CURB WEIGHT (kg)	2225
TURNING CIRCLE (m)	11.8
MAX BOOT CAPACITY (l)	461
TOWING CAPACITY (kg) (Braked)	2000

\* Pending Final Homologation on Luxury and Premium grades

# AC CHARGING TIMES

Our breakthrough Lexus Plug-in technology allows you to enjoy a long range of emissions-free driving in EV mode with amazing refinement and powerful acceleration from a single charge, carried out at home or on the go. But that is only half the story. The car's Lexus Self-Charging Hybrid powertrain then comes into its own, providing an exceptionally efficient drive in hybrid mode, with low fuel consumption and emissions, irrespective of how long your journey is.

BATTERY & CHARGING	2.5 PHEV AWD
ON BOARD CHARGER (kW)	6.6
BATTERY CAPACITY (kWh)	18.1
RANGE (km)	66-68
32A WALL BOX CHARGE	Up to 2hrs 30 mins
10A HOME SOCKET	Up to 9hrs



# RX KEY ACCESSORIES

## RX ESSENTIAL PACKS



### TRUNK LINER

Tailored to fit the trunk of your vehicle and provide protection against dirt and spills. The design features a special anti-slip surface pattern to help stop luggage moving.



### FRONT & REAR MUD GUARDS

Lexus Mudguards are especially shaped to fit the wheel arches of your vehicle. They help maintain the vehicle exterior by protecting against excessive dirt, mud spray and flying stone chips.

## RX STYLE PACK



### LEXUS LEATHER TEXTILE FLOOR MATS

Genuine tailored fit rubber floor mats help protect your carpets against the very worst conditions that you or your passengers dare to tread inside.



### REAR CHROME GARNISH

The rear chrome garnish makes a statement by highlighting your car's strong rear-end design.



### CHROME SIDE SILLS

A bold dash of chrome along the lower side contours to emphasize the RX's sculptured urban styling.

## LEXUS HOMECARGE



### LEXUS HOMECARGE

Is the fastest and most convenient way to charge your plug-in hybrid or electric vehicle at home. The Lexus HomeCharge electric vehicle charger is the only charger compatible with the Lexus Link App. Contact your dealer for pricing.



**Scan the QR Code** for more information on accessories.



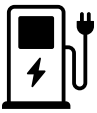
# DISCOVER PLUG-IN HYBRID

Plug-in Hybrids combine electric power and a petrol engine in one advanced powertrain. With a bigger battery plus the option to charge, Plug-in Hybrids offer increased pure-electric driving capability in EV mode than regular hybrids. The petrol engine also makes them ideal for longer trips.



## **Refuel as usual**

Refuelling your Plug-in Hybrid is easy. Top up with petrol as normal at filling stations to drive the combustion engine.



## **Easy charging**

A wallbox will help deliver fast and hassle-free charging at home. You can also charge your Toyota Plug-in Hybrid at home from a standard power supply. And on the move you can use the public charging network.



## **Lower emissions**

With the ability to travel further than Hybrids on electric power alone, Toyota's Plug-in Hybrid cars can cover local trips in EV mode, using no fuel and with no tailpipe emissions. Emissions may be associated with other aspects of the car's life cycle, such as tyre and brake wear.



**Scan the QR Code** to learn more about Lexus Plug In Hybrid!

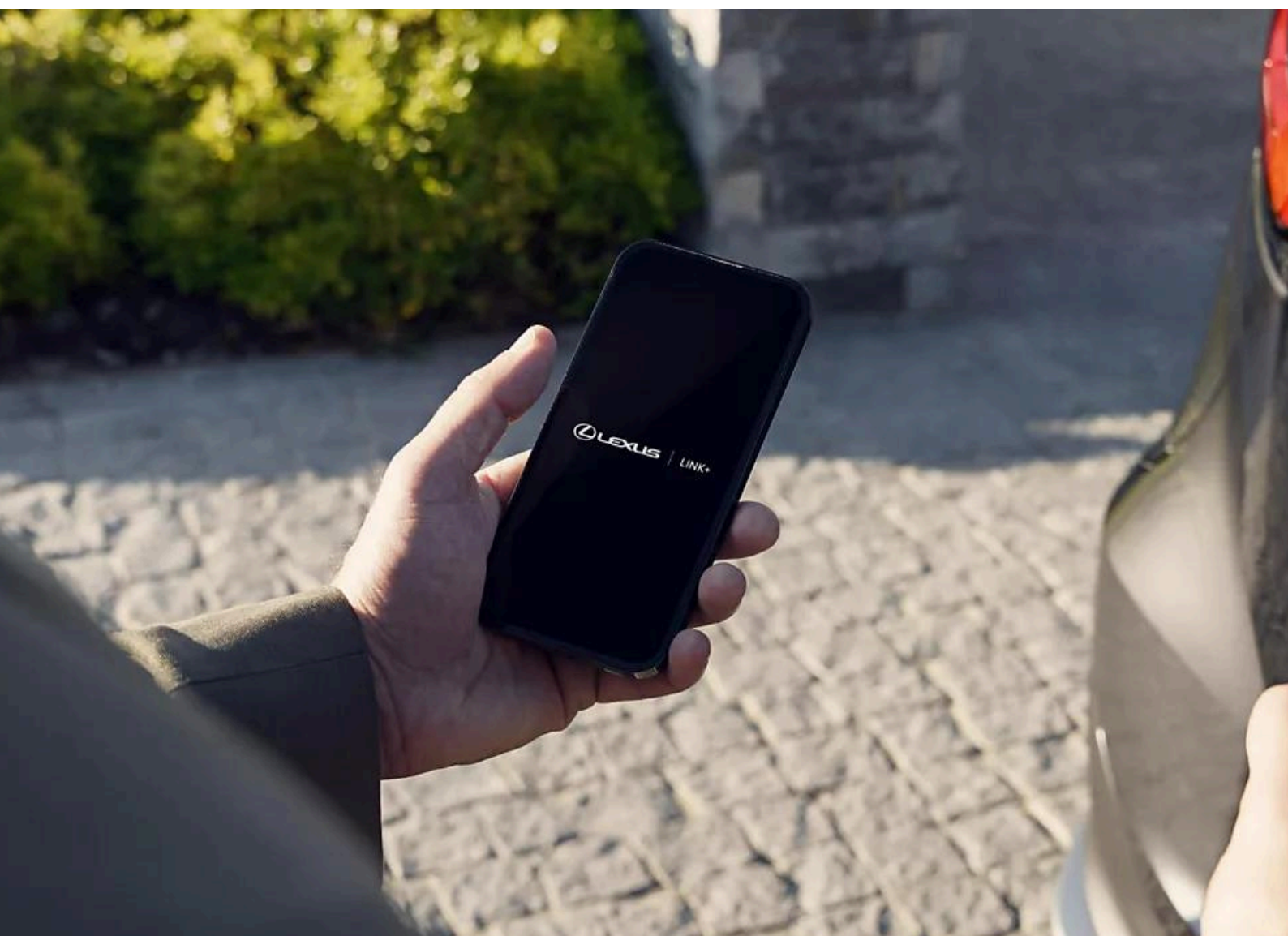
LEXUS



# LEXUS LINK CONNECTED SERVICES

Driving in a Lexus has never been better and with Lexus Link Connected Services the experience becomes even smoother, so you're always comfortable and in control, no matter where your drive takes you.

Scan the QR code to learn more about the Lexus Link + App.



---

# MANUFACTURER'S WARRANTY

---

For peace of mind Lexus manufacturer's warranty ensures that every trip runs smoothly with:



## Manufacturer Warranty

- 3yrs/100,000km - Manufacturers Warranty
- 5yrs/100,000km - All Hybrid Components
- 12yrs/unlimited mileage - Corrosion Perforation



## Hybrid Warranty

- 5yrs/100,000km - All Hybrid Components (Including Hybrid Battery)
- Up to 15yrs/unlimited mileage Hybrid Battery Extended Care once serviced with a Lexus Dealer



## Lexus Assistance

If you ever need help, Lexus Assistance is there for you, whenever you need breakdown cover in Ireland or Europe. Euro Assistance 24 offers Lexus roadside assistance 24 hours a day, seven days a week and 52 weeks a year.

- Arrange Hotel Accommodation in an Emergency
- Should You Be Unable to Drive
- Organise Roadside Assistance if Necessary

Call 1800 200 862 in Ireland or +353 1 6193641 from abroad.

For further warranty details or recovery services contact your local Lexus Dealer.





LEXUS



# LEXUS RELAX

Lexus Relax is a testament to the confidence we place in the quality of our vehicles. After your manufacturer's warranty finishes, you can still feel complete peace of mind, with 12 months OR 15,000km warranty when you service with us. So you can rest assured that your car is in safe hands—with expert technicians, who only use genuine parts. So your Lexus stays 100% Lexus.

Once your service is due, all you need to do is bring your Lexus in for a service and your Lexus Relax warranty will be renewed until your next service is due—up to 10 years vehicle age or 185,000km (whichever comes first) after the expiration of the manufacturer's warranty. See Lexus Website ([www.lexus.ie/relax](http://www.lexus.ie/relax)) for more details.







To the best of our knowledge, all information in this product guide is correct at the time of going to print. Details of specifications and equipment provided in this product guide are subject to local conditions and requirements and may, therefore, vary from models available in your area. Please enquire with your local dealer for details on your local specifications and equipment. Vehicle body colours may differ slightly from the printed photographs in this Product Guide. Lexus Ireland reserves the right to alter any details of specifications and equipment without prior notice. © 2025 by Lexus Ireland. No part of this publication may in any way be reproduced without the prior written approval of Lexus Ireland.